

# Commercial Land, Ayia Zoni, Limassol

## Agia Zoni, Limassol, Limassol, Cyprus Provinces








DELFI  
PROPERTIES

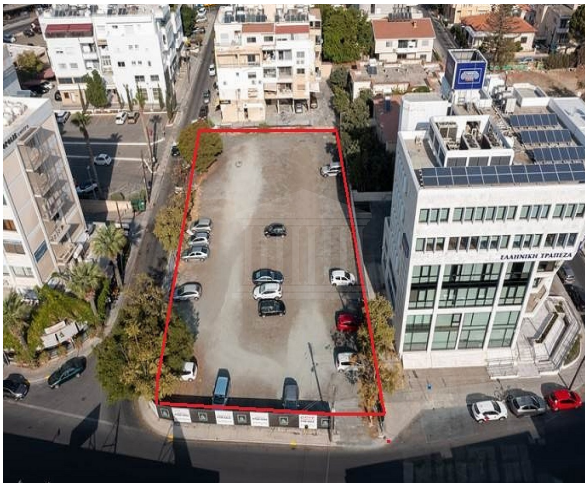
0

\* Subject to VAT DP01523/PA\_0084

### Description

The property located in Ayia Zoni quarter within Limassol district. It is adjacent to Gladstone Avenue, the one of the most commercial roads of the town. The property has a corner position and a rectangular shape with an extensive frontage of about 90 meters. The property falls into Commercial Zone ??3 with maximum density factor of 160%, coverage factor of 50% in 5 storeys and maximum height of 20,50m & into Commercial Zone ??4 with maximum density factor of 140%, coverage factor of 50% in 4 storeys and maximum height of 17,00m.

 Coverage -%	 Density 160%	 Zone COMMERCIAL	 Land Area 1767m <sup>2</sup>
 Max-Height 20.50m	 Title Deeds Yes		



### Property Details

Water Available	-
Electricity Available	-
Asphalt Road	Yes
Near Village	-
Near City Centre	Yes
Countryside view	-
See view	-
City view	-

### Disclaimer

Delfi Properties and Delfi Real Estate, its clients and any joint agents give notice that 1: They are not authorised to make or give any representations or warranties in relation to the property either here or elsewhere, either on their own behalf or on behalf of their client or otherwise. They assume no responsibility for any statement that may be made in these particulars. These particulars do not form part of any offer or contract and must not be relied upon as statements or representations of fact. 2: Any areas, measurements or distances are approximate. The text, photographs and plans are for guidance only and are not necessarily comprehensive. It should not be assumed that the property has all necessary planning, building regulation or other consents and Delfi Properties have not tested any services, equipment or facilities. Purchasers must satisfy themselves by inspection or otherwise.



FIND OUT MORE: 80070008 CYPRUS Nicosia Office: 1st & 2nd Floor, 20 Katsoni Str. & Kyriakou Matsi Ave.1082, Nicosia, Cyprus | Email: info@delfiproperties.com.cy CYPRUS Paphos Office: 9, Achepans 2 , Anavargos 8026 Paphos, Cyprus | Tel.: +357 26 010574 | Email: accounts@delfiproperties.com, info@delfiproperties.com.cy | Website: www.delfiproperties.com.cy