

# Plot In Pissouri, Limassol

## Pissouri, Limassol, Cyprus Provinces









DELFI  
PROPERTIES

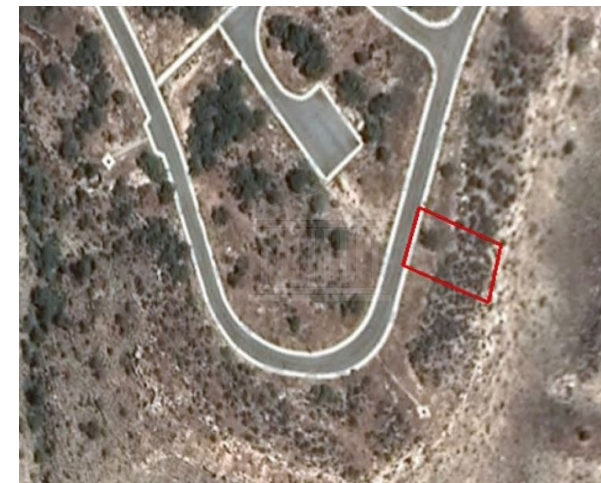
**173000**

\* Subject to VAT DP08295/RBC\_4035

## Description

The property is a Residential Land for Sale in Pissouri, Limassol. It measures of 875sqm in residential zone, with 20% building density, 20% coverage and 8.3m height.

 Coverage -%	 Density 20%	 Zone RESIDENTIAL	 Land Area 875m <sup>2</sup>
 Max-Height 8.3m	 Title Deeds Yes		



## Property Details

Water Available	Yes
Electricity Available	Yes
Asphalt Road	Yes
Near Village	Yes
Near City Centre	-
Countryside view	Yes
See view	Yes
City view	-

## Disclaimer

Delfi Properties and Delfi Real Estate, its clients and any joint agents give notice that 1: They are not authorised to make or give any representations or warranties in relation to the property either here or elsewhere, either on their own behalf or on behalf of their client or otherwise. They assume no responsibility for any statement that may be made in these particulars. These particulars do not form part of any offer or contract and must not be relied upon as statements or representations of fact. 2: Any areas, measurements or distances are approximate. The text, photographs and plans are for guidance only and are not necessarily comprehensive. It should not be assumed that the property has all necessary planning, building regulation or other consents and Delfi Properties have not tested any services, equipment or facilities. Purchasers must satisfy themselves by inspection or otherwise.



**FIND OUT MORE:** 80070008 **CYPRUS Nicosia Office:** 1st & 2nd Floor, 20 Katsoni Str. & Kyriakou Matsi Ave.1082, Nicosia, Cyprus | **Email:** info@delfiproperties.com.cy **CYPRUS Paphos Office:** 9, Achepans 2 , Anavargos 8026 Paphos, Cyprus | **Tel.:** +357 26 010574 | **Email:** accounts@delfiproperties.com, info@delfiproperties.com.cy | **Website:** www.delfiproperties.com.cy