

# Field In Episkopi, Paphos

## Episkopi, Pafos, Cyprus Provinces









DELFI  
PROPERTIES

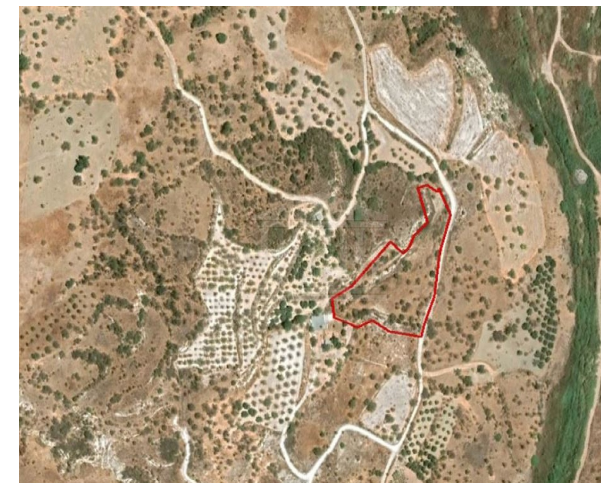
21000

\* Not Subject to VAT DP09827/RBC\_4302

## Description

The property is an Agricultural Land for Sale in Episkopi, Pafos. It measures of 6482sqm in agricultural zone, with 10% building density, 10% coverage and 8.3m height.

 Coverage -%	 Density 10%	 Zone AGRICULTURAL	 Land Area 6482m <sup>2</sup>
 Max-Height 8.3m	 Title Deeds Yes		

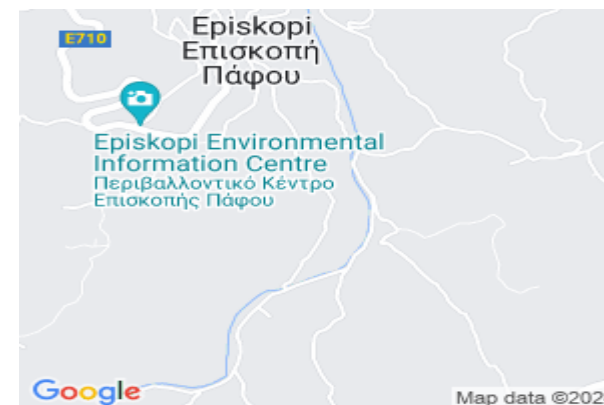


## Property Details

Water Available	-
Electricity Available	-
Asphalt Road	-
Near Village	-
Near City Centre	-
Countryside view	Yes
See view	-
City view	-

## Disclaimer

Delfi Properties and Delfi Real Estate, its clients and any joint agents give notice that 1: They are not authorised to make or give any representations or warranties in relation to the property either here or elsewhere, either on their own behalf or on behalf of their client or otherwise. They assume no responsibility for any statement that may be made in these particulars. These particulars do not form part of any offer or contract and must not be relied upon as statements or representations of fact. 2: Any areas, measurements or distances are approximate. The text, photographs and plans are for guidance only and are not necessarily comprehensive. It should not be assumed that the property has all necessary planning, building regulation or other consents and Delfi Properties have not tested any services, equipment or facilities. Purchasers must satisfy themselves by inspection or otherwise.



FIND OUT MORE: 80070008 CYPRUS Nicosia Office: 1st & 2nd Floor, 20 Katsoni Str. & Kyriakou Matsi Ave.1082, Nicosia, Cyprus | Email: info@delfiproperties.com.cy CYPRUS Paphos Office: 9, Achepans 2 , Anavargos 8026 Paphos, Cyprus | Tel.: +357 26 010574 | Email: accounts@delfiproperties.com, info@delfiproperties.com.cy | Website: www.delfiproperties.com.cy