

Residential Plot In Agios Athanasios, Limassol

Agios Amvrosios, Limassol, Cyprus Provinces








DELFI
PROPERTIES

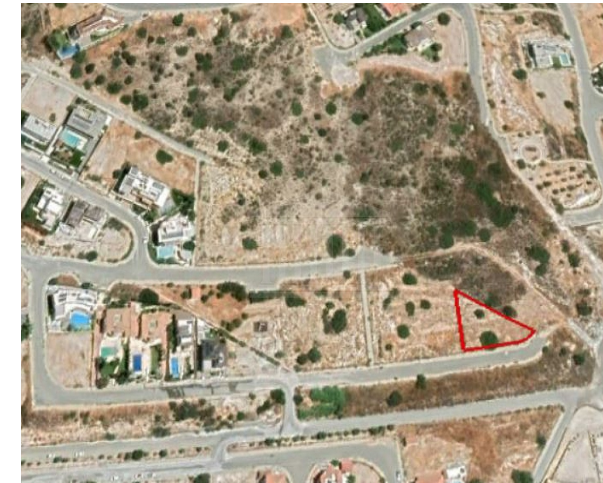
470000

* Subject to VAT DP13709/DRE_9162

Description

The property is a residential plot for sale in Agios Athanasios, Limassol. It measures of 806sqm and falls under the zone K?9, with 40% building density, 25% coverage and 10m height. The plot has an normal surface with a downward slope towards the east the the city and sea view. The property has easy access to the Limassol-Nicosia motorway as well as Agiou Athanasiou Avenue to the north. It' s ideal opportunity for development.

 Coverage -%	 Density 40%	 Zone RESIDENTIAL	 Land Area 806m ²
 Max-Height 10m	 Title Deeds Yes		



Property Details

Water Available	Yes
Electricity Available	Yes
Asphalt Road	Yes
Near Village	-
Near City Centre	-
Countryside view	-
See view	Yes
City view	Yes

Disclaimer

Delfi Properties and Delfi Real Estate, its clients and any joint agents give notice that 1: They are not authorised to make or give any representations or warranties in relation to the property either here or elsewhere, either on their own behalf or on behalf of their client or otherwise. They assume no responsibility for any statement that may be made in these particulars. These particulars do not form part of any offer or contract and must not be relied upon as statements or representations of fact. 2: Any areas, measurements or distances are approximate. The text, photographs and plans are for guidance only and are not necessarily comprehensive. It should not be assumed that the property has all necessary planning, building regulation or other consents and Delfi Properties have not tested any services, equipment or facilities. Purchasers must satisfy themselves by inspection or otherwise.



FIND OUT MORE: 80070008 CYPRUS Nicosia Office: 1st & 2nd Floor, 20 Katsoni Str. & Kyriakou Matsi Ave.1082, Nicosia, Cyprus | Email: info@delfiproperties.com.cy CYPRUS Paphos Office: 9, Achepans 2 , Anavargos 8026 Paphos, Cyprus | Tel.: +357 26 010574 | Email: accounts@delfiproperties.com, info@delfiproperties.com.cy | Website: www.delfiproperties.com.cy