

Touristic Field In Neo Chorio, Paphos

Neo Chorio Pafou, Pafos, Cyprus Provinces









DELFI
PROPERTIES

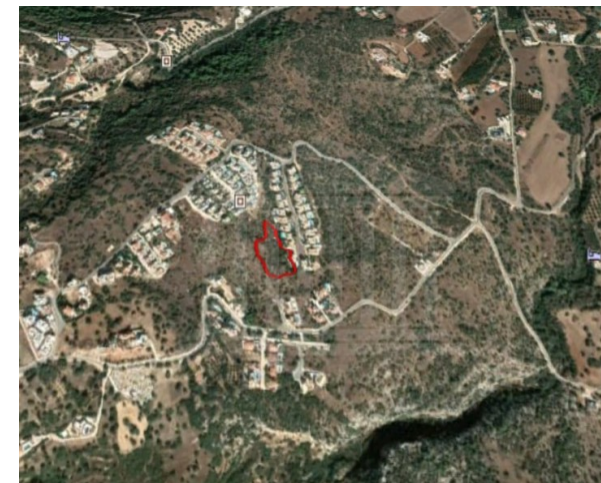
356000

* Subject to VAT DP01457/PA_0025

Description

The property is a touristic field for Sale in Neo Chorio, Pafos. It has irregular shape with slightly sloping surface and offers a nice view to Polis Chrysochous Bay. It has access to a public road. It measures of 4348sqm in tourist zone ?3?5, with 30% building density, 20% coverage and 7m height.

| | | | |
|---|---|--|--|
|  Coverage -% |  Density 30% |  Zone TOURIST |  Land Area 4348m ² |
|  Max-Height 7m |  Title Deeds Yes | | |



Property Details

| | |
|-----------------------|-----|
| Water Available | - |
| Electricity Available | - |
| Asphalt Road | - |
| Near Village | Yes |
| Near City Centre | - |
| Countryside view | - |
| See view | Yes |
| City view | - |

Disclaimer

Delfi Properties and Delfi Real Estate, its clients and any joint agents give notice that 1: They are not authorised to make or give any representations or warranties in relation to the property either here or elsewhere, either on their own behalf or on behalf of their client or otherwise. They assume no responsibility for any statement that may be made in these particulars. These particulars do not form part of any offer or contract and must not be relied upon as statements or representations of fact. 2: Any areas, measurements or distances are approximate. The text, photographs and plans are for guidance only and are not necessarily comprehensive. It should not be assumed that the property has all necessary planning, building regulation or other consents and Delfi Properties have not tested any services, equipment or facilities. Purchasers must satisfy themselves by inspection or otherwise.



FIND OUT MORE: 80070008 **CYPRUS Nicosia Office:** 1st & 2nd Floor, 20 Katsoni Str. & Kyriakou Matsi Ave.1082, Nicosia, Cyprus | **Email:** info@delfiproperties.com.cy **CYPRUS Paphos Office:** 9, Achepans 2 , Anavargos 8026 Paphos, Cyprus | **Tel.:** +357 26 010574 | **Email:** accounts@delfiproperties.com, info@delfiproperties.com.cy | **Website:** www.delfiproperties.com.cy